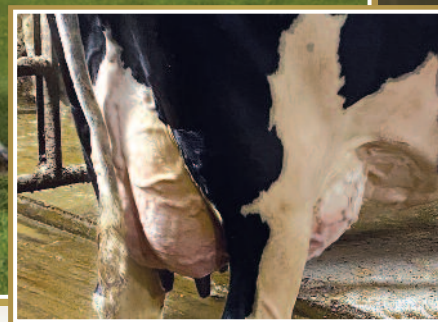


*Cybil Fisher*

**Kings-Ransom Dorc Dextra EX-94 2E 5\***

Nom. Holstein International's Global Cow of the Year  
15 sons in I.A.  
2<sup>e</sup> mère | 2<sup>nd</sup> Dam



**Kings-Ransom Pbal Dreamy EX**

4-00 16,237 kg 3.3% 3.4% (338-306-365)  
\*POC GMACE LPI 3122 • Dam of Drastic-P  
Mère | Dam

**4 embryos x TOTEM de Dreamy (sem. sexée)**

**4 TOTEM (Sexed semen) embryos from Dreamy**

Produits | Produced

CAN-PA Dec\*20 PA LPI 3324  
KG M 1790 F 66 %F-0.04  
MR 105 P 74 %P 0.14  
CAN-PA Dec\*20 CONF 8  
MS 7 F&L 6 DS 3 RP 5

4th-12th Maternal Dam

PEN-COL MTOTO DIMA-ET VG-88-8YR-USA  
PEN-COL COMMOTION DEANNA EX-91-2E-USA  
PEN-COL MASCOT DEANNA-ET EX-91-5YR-USA  
PEN-COL-A CLEITUS DAWN-ET VG-87-4YR-USA

PEN-COL BELL DREAM VG-85-10YR-USA  
PEN-COL CONDUCTOR DEVINE VG-USA  
PEN-COL WAYNE DEENA VG-88-5YR-USA  
PEN-COL ELEVATION DESTINY VG-87-5YR-USA  
INKA WHIRLHILL PABST DELLA EX-90-3E-USA

**S-S-I MILLINGTON TOTEM-ET PB**

HO840M3131003184 B&W \*POF\*A1A2\*CVF\*RDF\*BY  
CAN-GEV Dec\*20 93%Rel GLPI 3525/87%  
KG M 1469/81% F 96/97% %F 0.34 PRO\$  
MR 106 P 67/92% %P 0.14 3113  
CAN-GEV Dec\*20 88%Rel CONF 9/95%  
MS 8 F&L 8 DS 8 RP 5

Progeny Data: 123 Daus: 75.00% GP+  
0EX 10VG 83GP 30G 0F  
131 DAUS ME AVG: 12737 514 4.0 415 3.3  
AVG BCA: M241 F263 P251

**DE-SU MILLINGTON 12074-ET PB**

HOUSAM72851617 B&W \*POF\*A1A2\*CDF\*CVF\*RDF\*  
CAN-GEV Dec\*20 94%Rel GLPI 3097/89%  
KG M 1514 F 104 %F 0.39 P 69 %P 0.14  
CAN-GEV Dec\*20 89%Rel CONF 0

**JOSEY-LLC JCY SKYE 8948-ET**

HO840F3012130217 ET B:01 Mar 2014

**MELARRY ROBUST MILES-ET PB**

HOUSAM70594754 B&W \*POF\*A2A2\*CDF\*CVF\*RDF\*

**DE-SU 1438-ET PB**  
HOUSAF70626589 B&W ET B:12 Nov 2011  
EX-90-6YR-USA

**COYNE-FARMS JACEY CRI-ET PB**

HOUSAM70541519 B&W \*POF\*CVF\*BYF\*BLF\*DPF ET

**DYMENTHOLM SUNVIEW SKYE PB**  
HOCANF11425885 B&W \*RDF ET B:06 Mar 2012  
VG-85-2YR-USA

**KINGS-RANSOM PBAL DREAMY-ET PB**

HO840F3129373768 B&W \*POC ET B:28 Apr 2015  
VG-87-3YR-USA EX-90-5YR-CAN  
MS:90 (FA:8 RAH:7 RAW:7) F&L:90 DS:91 RP:89  
CAN-GEV Dec\*20 84%Rel GMLPI 3122/80%  
KG M 2110/99% F 36/75% %F-0.40 PRO\$  
MR 104 P 81/99% %P 0.09 2339

GMACE	Dec*20	80%Rel	CONF	6/81%
		MS 6 F&L	3	DS 0 RP 5
01-11	289	10351	332	3.2 346 3.3
02-10	305	15505	565	3.6 501 3.2
	351	17217	630	3.7 566 3.3
		BCA	352	347 358
04-00	305	16237	542	3.3 555 3.4
		BCA	338	306 365
05-00	P199	15753	545	3.5 554 3.5
		PBCA	315	296 353
4	LACT:	55856	1895	3.4 1880 3.4 KG
		Avg BCA:	M335 F316 P359	

2 Superior Lactations  
Progeny Data: 0EX 1VG 0GP 0G 0F  
1 DAUS ME AVG: 14450 630 4.4 504 3.5  
AVG BCA: M273 F323 P305

**VIEW-HOME POWERBALL-P-ET PB**

HO840M3011789392 B&W \*POC\*A2A2\*CDF\*CVF\*RD  
CAN-GEV Dec\*20 98%Rel GLPI 2986/94%  
KG M 1735 F 44 %F-0.19 P 86 %P 0.23  
CAN-GEV Dec\*20 95%Rel CONF 3

**KINGS-RANSOM DORC DEXTRA-ET PB**

HOUSAF69839978 B&W \*BYF ET B:16 Oct 2010  
EX-94-2E-USA 5\*(0/25)  
02-04 305 12923 552 4.3 421 3.3  
04-08 305 15867 586 3.7 511 3.2  
365 18266 677 3.7 595 3.3  
05-10 305 15091 578 3.8 484 3.2  
06-11 305 12723 472 3.7 394 3.1  
4 LACT: 76544 3026 4.0 2526 3.3 KG  
Progeny Data: 1EX 5VG 1GP 0G 0F  
7 DAUS ME AVG: 15297 593 3.9 486 3.2  
AVG BCA: M289 F304 P294

**DA-SO-BURN MOM EARNHARDT P PB**

HOUSAM68972328 B&W \*POR\*A1A2\*CVF\*RDF\*BYF\*  
VG-86-2YR-USA

**PINE-TREE 2149ROBST 4846-ET PB**

HOUSAF69804610 B&W B:16 Mar 2011  
VG-87-7YR-USA 2\*(0/13)

**COYNE-FARMS DORCY-ET PB**

HOUSAM139005002 B&W \*A1A2\*CDF\*BYC\*CVF\*BLF  
VG-87-4YR-USA ST\*15

**KINGS-RANSOM BAXTER DOLLY PB**

HOUSAF65828192 B&W \*BYF B:26 Sep 2008  
VG-87-6YR-USA DOM  
05-10 305 10764 387 3.6 330 3.1  
365 12243 439 3.6 374 3.1  
2 LACT: 23021 840 3.6 713 3.1 KG  
Progeny Data: 0EX 1VG 0GP 0G 0F